

28GFX2



AQUASPORT



| LOA | BEAM | DRAFT | WEIGHT | FUEL CAPACITY | LIVWELL | MAX HP |
|-------|------|-------|----------|---------------|---------|--------|
| 28'3" | 9'6" | 20" | 5880 LBS | 205 GALS | 46 GALS | 600 HP |

Digital Switching & MFD

Axiom XL 24-inch premium, glass bridge chartplotter. YachtSense digital switching. Custom AquaSport touchscreen interface for controlling onboard lighting and systems. AR200 Camera for augmented reality. CAM300 Eyeball CCTV with IP connected day and night video camera.



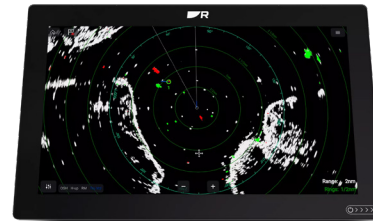
Sea Keeper Ride

Leveling system eliminates up to 70% of underway pitch and roll, providing comfort, control, and confidence. Seakeeper Ride is the first and only Vessel Attitude Control System



Navigation Plus

Radar/Single Forward-Facing Camera/Autopilot: EV-DBW Autopilot with p70Rs control head, EV2 Sensor Core, CAM 300 Ray Marine, and upgraded Cyclone 55 watt 4ft open array radar



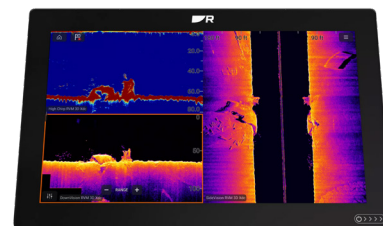
Thermal Vision Go

FLIR: M332 Single Payload 320 Thermal Camera, 24-deg HFOV, Sleek Mounting Bracket - Scanstrut



Fish Finder Plus

RVM1600 RealVision Black Box with 1kW Sonar, DownVision, SideVision and RealVision 3D, RVM-420 RealVision 3D Stainless Steel Thru-Hull Transducers, Port & Starboard 20°



Standards

28GFX2

28GFX2



Hull & Deck

- Vacuum Infused Composite/Resin Stringer System
- Cup Holders: Stainless Steel (10)
- 8" Stainless Steel Pull-up Cleats (6)
- Stainless Steel Rubrail
- Stainless Steel Bow and Stern Tow Eyes – (3)
- Stainless Steel Thru Hulls
- Tension Hinges: Stainless and Brass
- Transom Walkthrough
- Port Side Dive Door
- Rod Holders: (18) Stainless Steel
- Aluminum 4-Step Dive Ladder with Handrails
- Drain Covers: Stainless Steel
- 100Q forward floor storage with recessed 5 gallon bucket
- 2 x 120Q In-Deck Fish Boxes/Storage Macerated, Port & Starboard
- Outboard Motor Bracket
- Stainless Steel Bow Roller
- Upper Bow Storage with Molded Fiberglass Hatches
- Model Number and Logos, Raised
- Wash Down: Raw Water Washdown, Stern
- Under Gunnel Rod Storage
- Fresh Water Tank w/ Washdown (13gal)

Console & Helm

- Seastar Electric Hydraulic Steering
- Dash Panel: Backlit Digital Membrane Switch Panel
- Tempered Glass Windshield with Electrical Actuated Vent– 3 Sided, w/ Windshield Washer and Wipers
- Integrated Molded in Footrest
- 3 Bank Battery Charger
- Rear Facing Slide Out Cooler Compartment (65qt Yeti)
- Stainless Steel Cup Holders (2)
- USB and 12v Receptacle with Circuit Breaker Protection
- Wireless Phone Charger w/ Clamp
- Battery Management Panel
- 3xAGM Batteries
- RGB Courtesy Lighting
- Electric Marine Horn
- Ritchie Voyager Compass
- 3 Spoke Polished Steering Wheel w/ Turning Knob
- ABYC Standard Fire Extinguisher
- Macerated Porcelain Head with Overboard Discharge and Holding Tank (6gal)

Engineered Hardtop

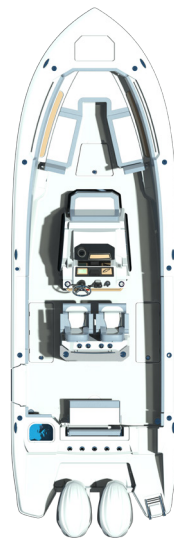
- Flood/Search LED Light Bar, Forward & Aft, 10,000+ Lumens- Independently Switched
- Integrated E-Box, Acrylic Door, Recessed Overhead LED Lights
- Integrated Aluminum Frame (Anodized as Standard)
- Navigation Lights, Port & Starboard
- Outrigger Pads
- Standard Anchor Light, Folding
- Integrated Mounting for Optional Navigation Cameras
- Integrated Speakers with Premium Fusion Stereo Option

Livewell, Pumps & Storage

- 46 Gal Transom Livewell with 800 GPH Pump
- Bow Anchor Storage with Fiberglass Molded Hatch, Friction Hinges
- 2000 GPH Bilge Pump with Float Switch (1)
- Fresh Water Washdown Pump
- In-Deck Storage, Fiberglass Hatches, Diaphragm Pumps, Port & Starboard
- Molded Fiberglass Bilge Access Hatches
- Raw Water Washdown Pump

Seating & Upholstery

- Forward Facing Backrests in Bow Seating with Added Storage
- Bow Storage, Insulated and Dry, with Hatches, Friction Hinges
- Updated Upholstery Design
- Bow Upholstered Bench Cushion w/ Backing
- Chaise Lounge Seating Upholstered/ Contoured
- Fiberglass Molded Helm Seat w/ Footrests and Integrated Tackle Station
- Pull Out Removeable 65qt Yeti Cooler
- Premium Aft Seating w/ Polished Stainless-Steel
- Premium Helm Seating w/ Arm Rests Upholstered with Marine Grade Material



Options & Pricing

| | |
|--|-----------|
| Twin Suzuki 300APXW White 25" Motors | \$258,847 |
| Gloss White Aluminum Top | \$0 |
| White w/ Stainless Insert Rub Rail | \$0 |
| Ice Blue Hull Topside Color (Waterline up) | \$1,090 |
| Pure White Upholstery | \$0 |
| Single 24" RayMarine Multifunction Display System (Standard) | \$0 |
| VHF Package: Ray 91 VHF Black Box w/ AIS RX (Includes Wired Handset, Passive Speaker, and Cable) | \$1,988 |
| Navigation Plus Package: Radar/Single Forward-Facing Camera/Autopilot: EV-DBW Autopilot with p70Rs control head, EV2 Sensor Core, CAM 300 Ray Marine, Quantum 2 Dopler Radar | \$8,718 |
| Thermal Vision Go Package: FLIR Camera/Sleek Mounting Bracket: M332 Single Payload 320 Thermal Camera, 24-deg HFOV, Sleek Mounting Bracket - Scanstrut | \$9,039 |
| Fish Find Plus Package: Side Scanning Sonar/Transom Sonar: RVM1600 RealVision Black Box Sonar with 1kW Sonar, DownVision, SideVision and RealVision 3D Sonar, RVM-420 RealVision 3D Stainless Steel Thru-Hull Transducers, Port & Starboard 20 Deg. | \$6,347 |
| Seakeeper Ride Boat Leveling System Eliminates up to 70% of underway pitch and roll, providing comfort, control, and confidence. Seakeeper Ride is the first and only Vessel Attitude Control System (VACS). Auto Lev-eling. | \$0 |
| Fusion AS Premium Audio Package:MS-BB100 Black Box marine digital media receiver with built-in Bluetooth, Fusio Signature Series 3i Sports White Marine Speakers (1) 10" CRGBW sub woofer, (4) 8.8" CRGBW speakers w/ white grill, (2) 6.5" speakers w/white grill and 2000 watt amplifier and Stealth Antenna | \$4,167 |
| Pair of GEMLUX Deluxe Outrigger Bases w/ backing plates OR-BA-12 (Installed) w/ Deluxe Collapsible Hybrid 18' Outrigger Poles Black OR-HBR-18-B-O2 | \$6,283 |
| Underwater Lights RGBW | \$898 |
| Float-On Trailer with Aluminum Rims (Salt Water Trailer) | \$10,834 |
| Edson Steering Wheel Upgrade - 13" Power Wheel, Stainless, w/SS Nut & CG Knob | \$577 |
| Standard Seastar Optimus EPS Electric/Hydraulic Steering (Yamaha Integrated Steering if Yamaha Motors are Ordered) | \$0 |
| Upgrade from Quantum 2 Doppler Radar to Cyclone 55 watt 4' Open Array radar | \$4,488 |

AQUASPORT

AQUASPORT

**Total Internet Price
\$313,276**